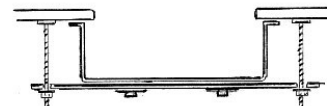
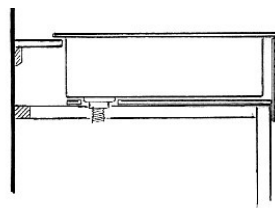
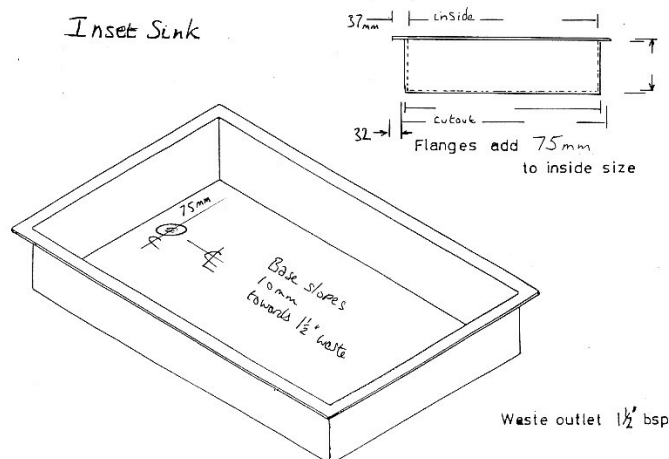


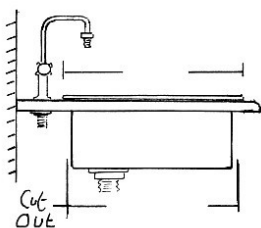
## Inset Sinks - Polypropylene



Inset Sink for self-build into a worktop or unit carcass

Flat bottom slightly sloped to one end provided with fixing lugs to keep it flat in contact with a base board providing support underneath

### Optional Laboratory Quality Taps for bench mounting



Code 2122



Code 2123

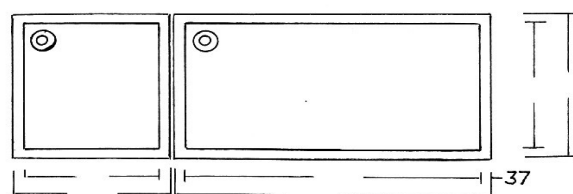
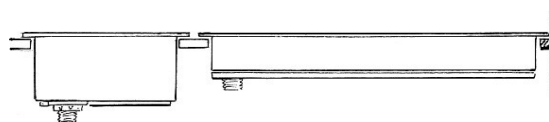
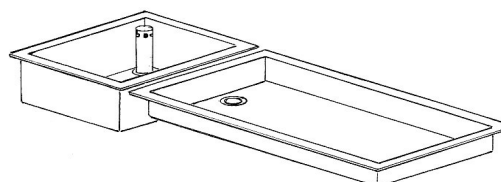
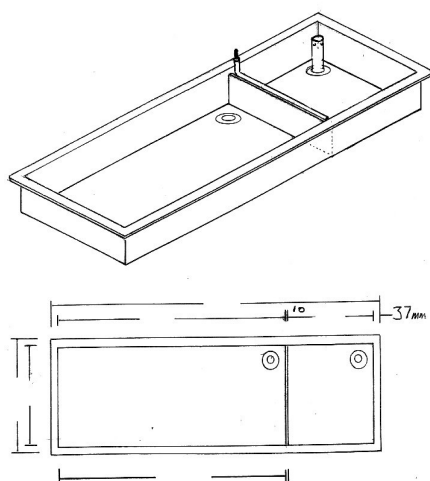


Code 2121



Code 2127

**All inset sinks are custom-made to order to the exact dimensions required for the purpose - or to fit the space available ..... please refer to the list for price parameters**



Two compartment sink (partition added), shown with an infeed spraypipe with hose adaptor and wash overflow  
Code 2110

**Colour Choice ....** Dark Grey RAL 7011 or Beige Grey RAL 7032

[sales@richards.uk.com](mailto:sales@richards.uk.com)

**Richards of Hull**

tel 01482 442422

fax 01482 442362

[www.richards.uk.com](http://www.richards.uk.com)